



SONIFEX

openGear Cards
January 2010



www.sonifex.co.uk

t: +44 (0)1933 650 700

f: +44 (0)1933 650 726

sales@sonifex.co.uk

openGear Cards



openGear is an open-architecture rack system developed by Ross Video, a leader in video technologies, to provide a standard rack-based platform on which companies can develop card-based audio & video products. The adoption of openGear based cards by Sonifex allows customers to choose Sonifex cards as part of an overall terminal equipment solution.

The openGear frames offer the flexibility of independent rear modules for connectivity to a wide array of interfaces and control via TCP/IP connectivity using a free application called Dashboard.

For more general information, visit the following websites:

<http://www.opengear.tv/>

<http://www.rossvideo.com/rossgear/opengear/>



OG-DDA8 8 Output Digital Audio Distribution Amplifier

24^{BIT}
192^{KS}

There are four products in the Sonifex openGear range:

- OG-DDA8B openGear 8 Output Balanced Digital Audio Distribution Amplifier, 2 Inputs
- OG-DDA8U openGear 8 Output Unbalanced Digital Audio Distribution Amplifier, 2 Inputs
- OG-DDA8BS openGear 8 Output Balanced Digital Audio Distribution Amplifier, 2 Inputs & Sample Rate Conversion
- OG-DDA8US openGear 8 Output Unbalanced Digital Audio Distribution Amplifier, 2 Inputs & Sample Rate Conversion

Sonifex OG-Frame2U

The OG-Frame2U is a 2RU high density modular frame, designed to accommodate up to 20 openGear cards.



Sonifex OG-Frame2U

Features

- 2RU frame houses up to 20 openGear cards.
- Includes 1 x OG-PSU2U power supply and 1 x processor card with networking.
- Supports any mix of analogue, digital, video and audio modules in the same frame.
- Modular I/O panels for connector flexibility.
- Removable front door for easy fan servicing.
- Frames come standard with cooling.

Sonifex OG-PSU2U Power Supply



The OG-PSU2U power supply can be used in the OG-Frame2U frame. This is a hot swappable 150W power supply. The specifications of this power supply are outlined in following sections. A single power supply can power the entire frame. Two power supplies can be used to provide additional redundancy on power supply or AC input failure.

OG-DDA8B openGear 8 Output Balanced Digital Audio Distribution Amplifier, 2 Inputs & OG-DDA8U openGear 8 Output Unbalanced Digital Audio Distribution Amplifier, 2 Inputs

NEW!

Audio Specification For OG-DDA8B & OG-DDA8U

Input Imped: 110Ω ±20% balanced (OG-DDA8B)
75Ω ±5% unbalanced (OG-DDA8U)

Output Imped: 110Ω ±20% balanced (OG-DDA8B)
75Ω ±5% unbalanced (OG-DDA8U)

Sample Freq Range: 30-192kHz (i.e. including 32kHz, 44.1kHz, 48kHz, 64kHz, 88.2kHz, 96kHz, 176.4kHz & 192kHz)

Signal Level: 3V/10V peak to peak min/max (OG-DDA8B)
Balanced min 0.5V ±20% peak to peak (OG-DDA8U)

Equipment Type

OG-DDA8B: 8 output balanced digital audio distribution amplifier, 2 inputs

OG-DDA8U: 8 output unbalanced digital audio distribution amplifier, 2 inputs

Physical Specifications

Dimensions 33.5cm (W) x 7.5cm (D) x 1.2cm (H)(Raw):
13.2" (W) x 3" (D) x 0.5" (H)

Dimensions 39cm (W) x 29cm (D) x 8.5cm (H)
(Boxed): 15.4" (W) x 11.5" (D) x 3.4" (H)

Weight: Nett: 0.15kg Gross: 0.4kg
Nett: 0.3lb Gross: 0.9lb

Accessories

OG-R2-10A: openGear single rear module using balanced WECO 3 pin I/O for OG-Frame2U

OG-R2S-10A: openGear dual split rear module using balanced WECO 3 pin I/O for OG-Frame2U

OG-R2-10B: openGear single rear module using unbalanced BNC I/O for OG-Frame2U

OG-R2S-10B: openGear dual split rear module using unbalanced BNC I/O for OG-Frame2U

The OG-DDA8B and OG-DDA8U digital distribution amplifiers are used for distributing balanced and unbalanced digital audio respectively, repeating both the audio data and the status information of the input whilst re-normalising to standard digital audio levels.

The OG-DDA8B has 2 selectable balanced digital audio inputs one of which can be distributed to 8 balanced digital audio outputs using Weco 3 pin connectors on

the OG-R2-10A or OG-R2S-10A connector boards, available separately.

The OG-DDA8U has 2 selectable unbalanced digital audio inputs one of which is distributed to 8 unbalanced digital audio outputs using BNC connectors on the OG-R2-10B or OG-R2S-10B connector boards, available separately.

Applications include distributing audio from a digital mixing desk to multiple digital



OG-R2-10A Rear Module



OG-R2S-10A Rear Module



OG-R2-10B Rear Module



OG-R2S-10B Rear Module

openGear Cards

- ▶ recorders, or feeding multiple studios with an output from a DAT machine.

Each board can accept input sample rates in the range of 30kHz - 192kHz, and bit

rates of 16, 20 and 24 bit. So, they can be used for standard CD signal distribution at 16 bit 44.1kHz, as well as for high quality 24 bit 192kHz recording.

Sonifex openGear boards are fully compatible with the Dashboard control software that allows you to monitor and change the board settings via an ethernet interface to the rack controller card.

OG-DDA8BS openGear 8 Output Balanced Digital Audio Distribution Amplifier, 2 inputs & Sample Rate Conversion

OG-DDA8US openGear 8 Output Unbalanced Digital Audio Distribution Amplifier, 2 inputs & Sample Rate Conversion



The OG-DDA8BS and OG-DDA8SUS digital distribution amplifiers with sample rate converters are used to convert a digital audio input to a different sample rate and to distribute it.

The OG-DDA8BS has 2 selectable balanced digital audio inputs (or input and one external sync input) one of which is distributed to 8 balanced digital audio outputs using Weco 3 pin connectors on the OG-R2-10A or OG-R2S-10A connector boards, available separately.

The OG-DDA8SUS has 2 selectable unbalanced digital audio inputs (or input and 1 external sync input) one of which is distributed to 8 unbalanced digital audio outputs on BNC connectors on the OG-R2-10B or OG-R2S-10B connector boards, available separately.

The output rate can follow the input (i.e. no sample rate conversion) or can be derived from an internal master clock, an external digital audio sync input or from one of two rack connected reference signals.

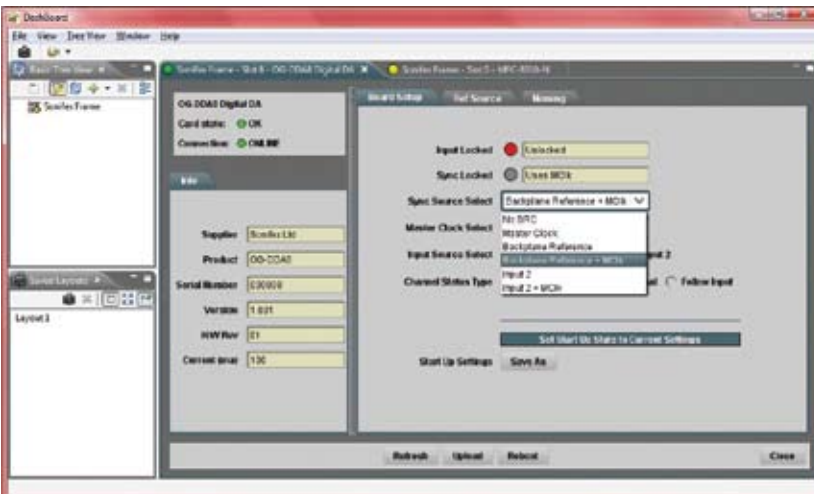
The reference signal can be a digital audio clock, a blackburst video reference or a tri-level HD video reference.

All rates from 32kHz to 192kHz are supported by the SRC and output circuitry. The cards have an option for the sample rate converter to fall back to the master clock frequency when the sync signal is not present.

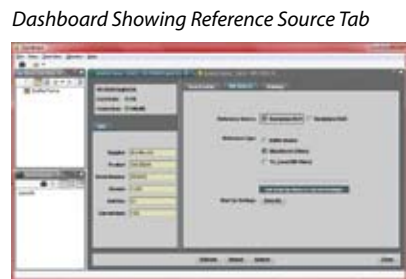
Sonifex openGear boards are fully compatible with the Dashboard control software that allows you to monitor and change the board settings via an ethernet interface to the rack controller card.

The DashBoard Network Control & Monitoring system is a free application designed for remote control & monitoring of the open architecture, openGear™ platform via TCP/IP.

Audio Specification For OG-DDA8BS & OG-DDA8US	
Input Imped:	110Ω ±20% balanced (OG-DDA8BS) 75Ω ±5% unbalanced (OG-DDA8US)
Output Imped:	110Ω ±20% balanced (OG-DDA8BS) 75Ω ±5% unbalanced (OG-DDA8US)
Sample Freq Range:	30-192kHz (i.e. including 32kHz, 44.1kHz, 48kHz, 64kHz, 88.2kHz, 96kHz, 176.4kHz & 192kHz)
Signal Level:	3V/10V peak to peak min/max (OG-DDA8B) Balanced min 0.5V ±20% peak to peak (OG-DDA8U)
Equipment Type	
OG-DDA8BS:	8 output balanced digital audio distribution amplifier, 2 inputs & sample rate conversion
OG-DDA8US:	8 output unbalanced digital audio distribution amplifier, 2 inputs & sample rate conversion
Physical Specifications	
Dimensions (Raw):	33.5cm (W) x 7.5cm (D) x 1.2cm (H) 13.2" (W) x 3" (D) x 0.5" (H)
Dimensions (Boxed):	39cm (W) x 29cm (D) x 8.5cm (H) 15.4" (W) x 11.5" (D) x 3.4" (H)
Weight:	Nett: 0.15kg Gross: 0.4kg Nett: 0.3lb Gross: 0.9lb
Accessories	
OG-R2-10A:	openGear single rear module using balanced WECO 3 pin I/O for OG-Frame2U
OG-R2S-10A:	openGear dual split rear module using balanced WECO 3 pin I/O for OG-Frame2U
OG-R2-10B:	openGear single rear module using unbalanced BNC I/O for OG-Frame2U
OG-R2S-10B:	openGear dual split rear module using unbalanced BNC I/O for OG-Frame2U



Dashboard Showing Board Setup Tab With Sync Source List



Dashboard Showing Reference Source Tab



Dashboard Showing Naming Tab

SONIFEX

www.sonifex.co.uk

t:+44 (0)1933 650 700

f:+44 (0)1933 650 726

sales@sonifex.co.uk

61 Station Road
Irthlingborough
Northants NN9 5QE
United Kingdom

