

DHY-03RLY Latching Handset Relay Option for DHY-03, S and T

The DHY-03RLY is a latching handset relay option for the DHY-03, S and T. When a call is received on the TBU, and diverted to the telephone hybrid either by the front panel mounted line connect button or by means of the remote connect switch, the handset must be replaced. If the handset is not replaced the line will be double terminated resulting in poorer performance. With the DHY-03RLY option the handset will automatically be disconnected once a call has been diverted to the telephone hybrid.

Please Note:

The DHY-03RLY is a pin for pin extension of the Remotes socket without the 5V feed.

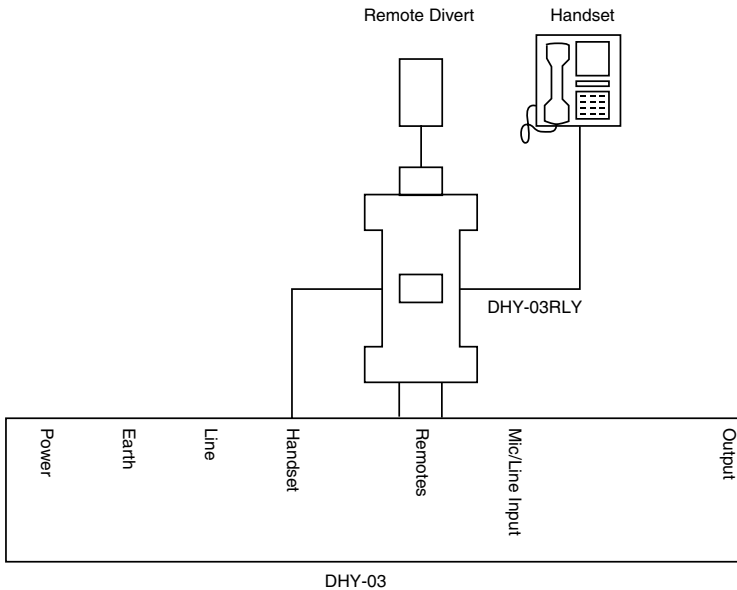


Fig 1-1: Localized drawing of the DHY-03 and how the Dhy-03RLY attaches.

Connecting the DHY-03RLY

Connect the DHY-03RLY to the REMOTES and HANDSET sockets on the back of the DHY-03 unit. Next connect the handset to the DHY-03RLY RJ11 socket, any connections made to the Remotes socket can then be connected to the DHY-03RLY.

To set the SCI serial control software first ensure that V1.008 or later is being used. (Upgrades can be downloaded from www.sonifex.co.uk).

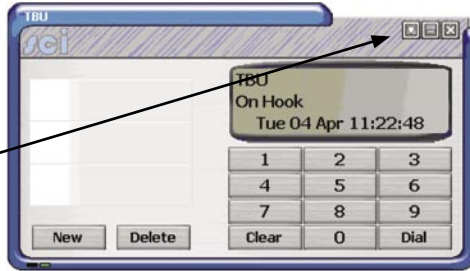
With V1.008 or later navigate the menu and select, "Mode", "Settings". Within this function, under "DTMF Select" choose "Line Connect". Once this is done click "**Upload Changes**". Now the handset will automatically disconnect when a call is diverted to the telephone hybrid.



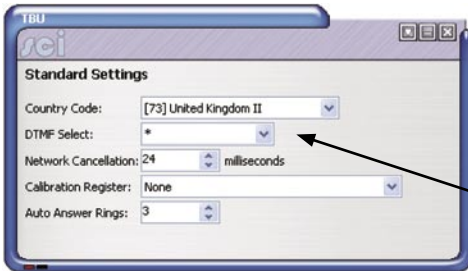


DHY-03RLY Latching Handset Relay Option for DHY-03, S and T

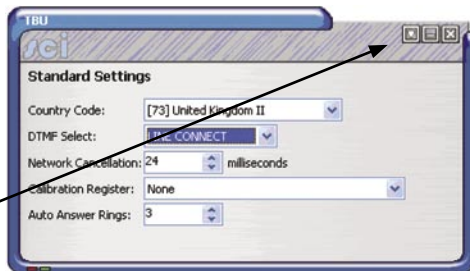
Setting the DHY-03RLY for remote Divert Function



Connect to the unit using the SCi software. Once connected go to Mode-Settings from the drop down box.



Change the DTMF Select option to Line Connect.



Click on Upload Changes from the drop-down box.

